

# Grand Hotel Europe \*\*\*\*\*



## Contact details

<http://www.belmond.com/grand-hotel-europe-st-peters-burg/>

1/7 Nevsky Prospekt, Mikhailovskaya Ulitsa, Saint-Petersburg, 191186

Tel.: +7 812 329 6000

3 min to metro station Gostinyy dvor

## Conference venue

*Belmond Grand Hotel Europe has always been rooted in the cultural landscape of St Petersburg. With influential guests such as Tchaikovsky and Pavarotti, its association with music, dance and literature has always remained strong.*

*Located in the heart of the city on Nevsky Prospekt and Mikhailovskaya Ulitsa, Belmond Grand Hotel Europe is renowned as a luxury hotel and cultural landmark in St Petersburg.*

*Italian architect Carlo Rossi used an impressive Neo-Baroque façade to combine neighbouring properties dating back to the 1820s to create one magnificent building for the Evropeyskaya Hotel Company. This opened as Hotel de l'Europe in 1875. The beautiful Art Nouveau designs still enjoyed today were introduced by Swedish-Russian architect Fyodor Lidval at the turn of the century.*

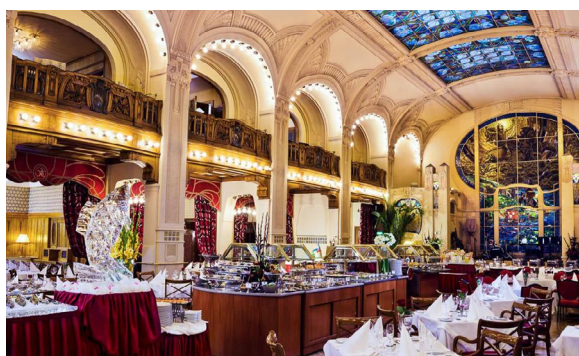
**Room prices - room block is booked for conference participants, see registration form.**

Deluxe	23 000 RUB
Deluxe Double	25 000 RUB

Hotel View



Restaurant



Krysha Ballroom

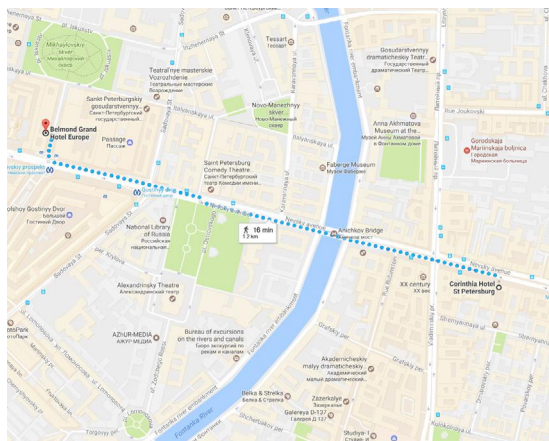


Deluxe





# Corinthia Hotel Europe \*\*\*\*\*



## Contact details

<http://www.corinthia.com/en/hotels/stpetersburg>

57 Nevsky Prospekt, Saint-Petersburg, 191025  
Tel.: +7 812 3802001

3 min to metro station Mayakovskaya

## Distance to Grand Hotel Europe:

5 min (1.6 km) by car (taxi - 200- 300 rub)  
16 min (1.2 km) on foot

*The Corinthia St Petersburg features a grand façade and rooms with a classic design. All rooms include air conditioning, a flat-screen TV and a luxury bathroom. Free Wi-Fi is available in public areas and rooms.*

*A breakfast buffet offers champagne and caviar. Guests can order international à la carte dishes and Sicilian specialties from the Italian chef that are served in the Imperial Restaurant or Executive Club Lounge featuring the elegant décor and view of the Nevsky Prospekt. Café Vienna offers freshly baked pastries.*

*Drinks can be enjoyed at the Nevsky Bar, or in the Lobby Bar. Live piano music is played here.*

## Room prices (the room price and availability may change)

Superior King	24 000 RUB
Standard Twin	25 300 RUB
Executive King	28 000 RUB

Hotel View



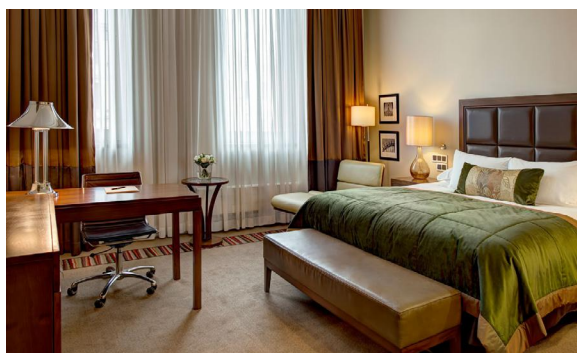
Roof terrace



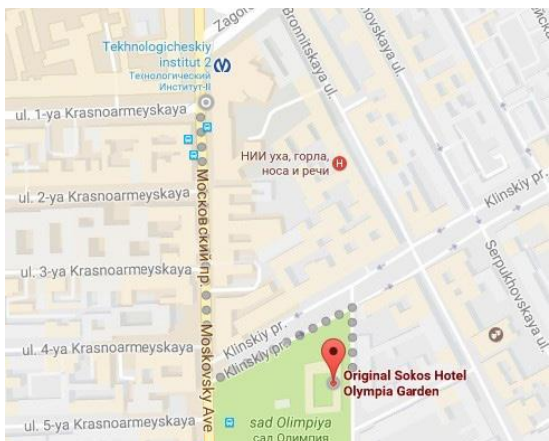
Restaurant



Executive King



# Original Sokos Hotel Olympia Garden \*\*\*\*



## Contact details

<https://www.sokoshotels.fi/en/st-petersburg/sokos-hotel-olympia-garden>

3 A, Bataiskii Pereulok, Saint-Petersburg, 190013

Tel.: +7 812 335 2270

3 min to metro station Tekhnologicheskii institut

## Distance to Grand Hotel Europe:

15 min (4 km) by car (taxi - 800 - 1000 rub)

40 min (3,2 km) on foot

*This 4-star hotel is situated directly opposite the Olympia Park in St. Petersburg. The Original Sokos Hotel Olympia Garden offers free Wi-Fi and stylish rooms with a flat-screen TV.*

*All interiors at Original Sokos Hotel Olympia Garden are warmly furnished with rich colours and wooden floors. The luxury bathrooms include a bath, shower and toiletries.*

*A full breakfast buffet is served at the Sokos. Guests can also enjoy French and international cuisine in the Fransmanni restaurant, which features elegant décor and an inviting fireplace. Sports' Bar 84 screens sports games and offers a variety of beer and burgers.*

*Guests at Original Sokos Hotel Olympia Garden are welcome to relax in the gym, sauna or in the lobby bar. The 24-hour reception can offer travel tips or a shuttle to St. Petersburg Airport, 10 km away.*

## Room prices (the room price and availability may change)

Standard Single	8 600 RUB
Standard King	8 600 RUB
Superior King	9 600 RUB

Hotel View



Fransmanni Restaurant



Sauna

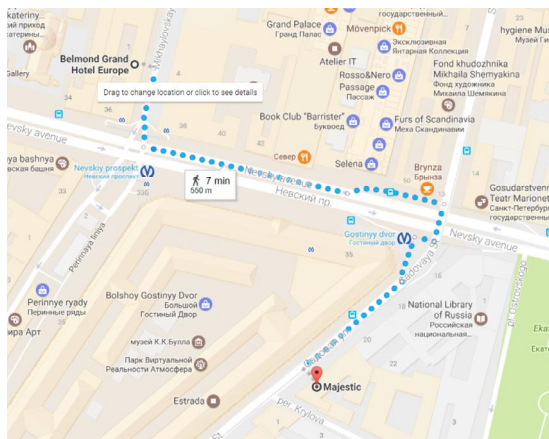


Standard King





# Majestic Boutique Hotel Deluxe\*\*\*\*



## Contact details

<http://hotelmajestic.ru/en/>

22, Sadovaya ulitsa, Saint-Petersburg, 191023

Tel.: +7 (812) 448 83 88

3 min to metro station Gostinyy dvor

## Distance to Grand Hotel Europe:

2 min (500 km) by car (taxi - 400 - 500 rub)

7 min (550 m) on foot

*One of our top picks in Saint Petersburg. Featuring free WiFi and a fitness centre, Majestic Boutique Hotel Deluxe offers accommodation in Saint Petersburg, 800 m from Church of the Savior on Spilled Blood.*

*The rooms have a flat-screen TV with satellite channels, a phone and climate control. Some units include a seating area to relax in after a busy day. You will find a tea set in the room. The bathrooms are equipped with a shower or bath. For your comfort, you will find bath robes, slippers and free toiletries.*

*Buffet breakfast is served in the hotel's Brasserie de Metropole restaurant complex, which includes the Metropole restaurant and a Belgium brewery. Majestic lobby bar operates around the clock and room service is available 24 hours a day.*

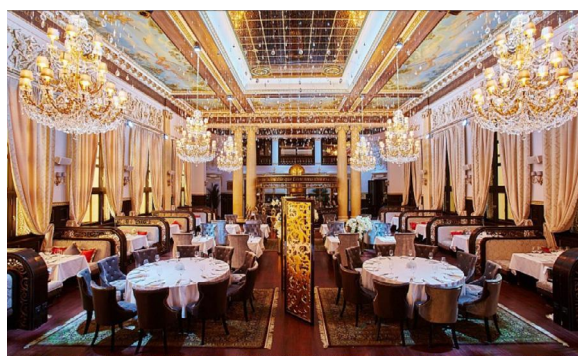
## Room prices (the room price and availability may change)

Standard Single	14 200 RUB
Standard Twin	18 400 RUB
Deluxe	22 100 RUB

Hotel View



Restaurant



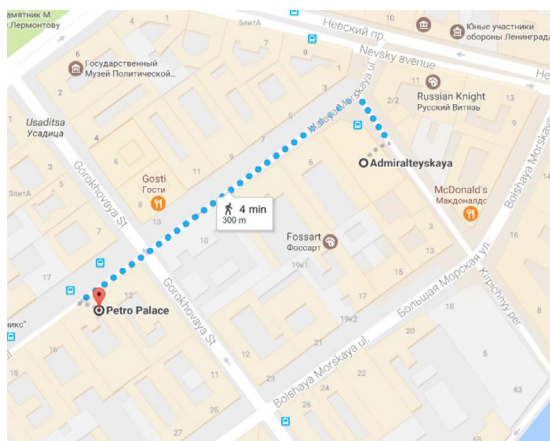
Bathroom



Standard Single



# Petro Palace Hotel \*\*\*\*



## Contact details

<http://www.petroplacehotel.com/home/?language=English>

14, Malaya Morskaya Ulitsa, Saint-Petersburg, 190000

Tel.: +7 812 571 30-06

4 min to metro station Admiralteyskaya

## Distance to Grand Hotel Europe:

5 min (1.3 km) by car (taxi - 400 - 500 rub)

15 min (1.3 km) on foot

*One of our top picks in Saint Petersburg. An indoor pool, well-equipped gym and air-conditioned rooms with flat-screen TV and free WiFi are offered at this recently renovated hotel, just a 5-minute walk from St. Petersburg's Palace Square and Nevsky Prospekt Avenue.*

*Italian Restaurant Trattoria Settimo Cielo offers beautiful views of St. Isaac's Cathedral and the Hermitage.*

*Petro Palace Hotel's classically styled rooms include a work desk, electric kettle and a minibar. The bright, modern bathrooms feature free toiletries and a hairdryer.*

*Spa facilities at the Petro Palace include a hot tub, sauna and massage room, and some rooms offer free all-day access. Tours of St. Petersburg can be booked at the 24-hour reception.*

*Guests can find a cash machine on site.*

## Room prices (the room price and availability may change)

Superior	18 700 RUB
Executive	19 700 RUB
Deluxe	24 700 RUB

Hotel View



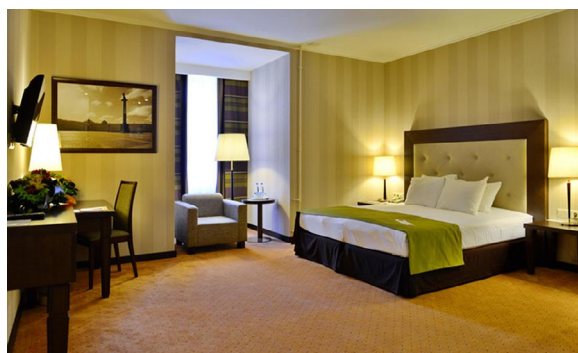
Restaurant



Sauna

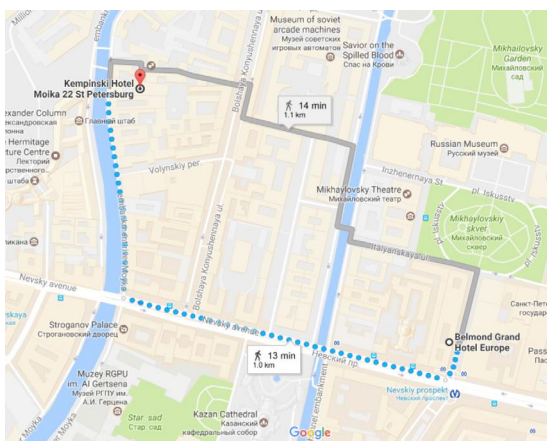


Superior





# Kempinski Hotel Moika 22 \*\*\*\*



## Contact details

<https://www.kempinski.com/en/hotels/welcome/>

14, Ulitsa Malaya Morskaya, Saint-Petersburg, 190000

Tel.: +7 812 335 91-11

3 min to metro station Nevskiy prospekt

## Distance to Grand Hotel Europe:

3 min (1 km) by car (taxi - 400 - 500 rub)

13 min (1.1 km) on foot

*One of our top picks in Saint Petersburg. This 5-star hotel in St Petersburg overlooks the Palace Square and the State Hermitage Museum. It features free Wi-Fi.*

*Furnished with antiques, the rooms are decorated in classic marine style with white and gold accents, and come equipped with a flat-screen TV, air conditioner, minibar, and have private bathrooms with heated floors, and fine bathroom amenities.*

*The Kempinski Hotel also features a spa. Guests can enjoy a range of massages.*

*The Kempinski is a 2-minute walk from the Nevsky Prospekt and is near Saint Petersburg shops and restaurants.*

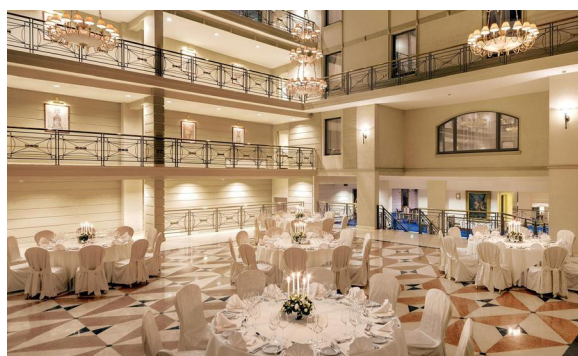
## Room prices (the room price and availability may change)

Buisness	27 000 RUB
Superior	29 000 RUB
Deluxe	33 300 RUB

Hotel View



Restaurant

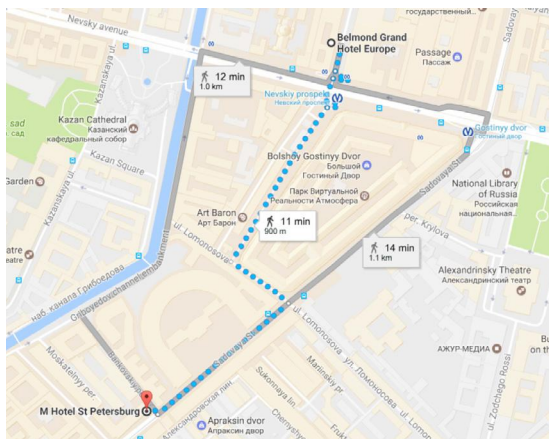


Lobby

Deluxe



# M-Hotel \*\*\*



## Contact details

<http://en.mhotelspb.ru/>

2, Pereulok Krylova, Saint-Petersburg, 191023

Tel.: +7 (812) 448-83-83

3 min to metro station Gostinyy dvor

## Distance to Grand Hotel Europe:

4 min (0.5 km) by car (taxi - 400 - 500 rub)

6 min (0.5 km) on foot

*M-Hotel is located in St. Petersburg's Golden Triangle district, just 100 m from the Alexandrinsky Theatre. It offers a breakfast buffet each morning.*

*The bright rooms at the M-Hotel feature dark wooden furniture, a flat-screen TV, electric kettle and a desk. The private bathrooms come with a hairdryer, slippers and toiletries.*

*In addition to the breakfast buffet, guests can order European and Russian cuisine in the hotel's café. Room service is also available for those wishing to dine in their rooms.*

*The Nevsky Prospect Metro Station is just a 2-minute walk away from the M-Hotel.*

## Room prices (the room price and availability may change)

Standard	8 000 RUB
Superior	15 000 RUB
Suite	33 300 RUB

Hotel View



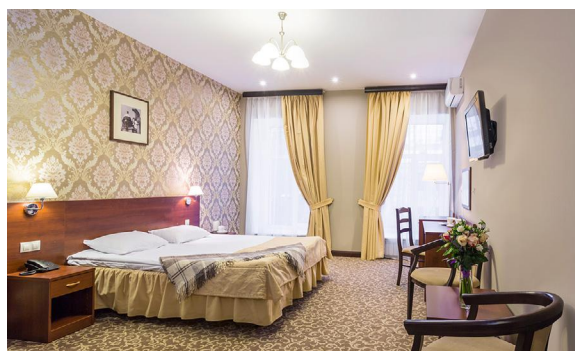
Breakfast



Suite Spa

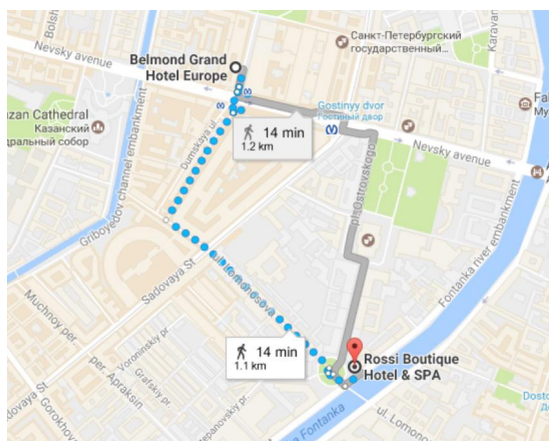


Suite





# Rossi Boutique Hotel \*\*\*\*



## Contact details

<http://www.rossihotels.com/eng/>

55, Fontanka River Embankment, Lomonosov Square,  
Saint-Petersburg, 191023

Tel.: +7 812 635 63-33

10 min to metro station Gostiny Dvor

## Distance to Grand Hotel Europe:

3 min (1 km) by car (taxi - 400 - 500 rub)

13 min (1.1 km) on foot

*One of our top picks in Saint Petersburg. Featuring a classic, 19th century design, this boutique hotel is by the Fontanka River, within a quarter mile of Nevsky Prospekt, Gostiny Dvor Metro and Ostrovsky Square.*

*The Rossi Boutique Hotel has individually decorated rooms with a flat-screen TV, free Wi-Fi and antique-style furnishings. All standard rooms face the quiet courtyard. Guests enjoy free phone calls to 1 international number of their choice, and small pets are welcome upon request.*

*As well as a breakfast buffet, excellent European, Asian and Japanese cuisine is served in the Restaurant Fiolet. The stylish bar has drinks, which can be enjoyed on the outside terrace.*

## Room prices (the room price and availability may change)

Executive Suite	17 100 RUB
Deluxe Room	14 000 RUB
Luxury Suite	20 000 RUB

Hotel View



Restaurant



Spa

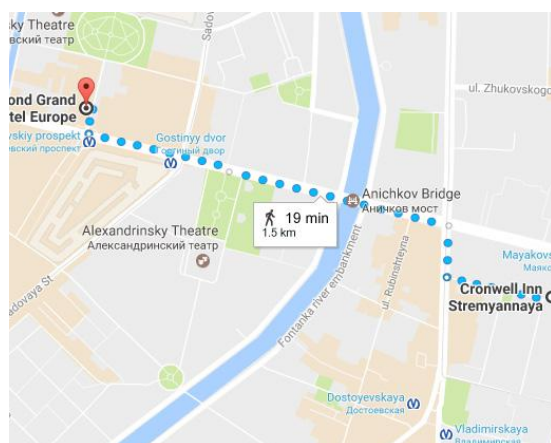


Suite





# Hotel Cronwell Inn Stremyannaya \*\*\*



## Contact details

<http://stremyannaya-hotel.ru/en/>

18, Stremyannaya street, Saint-Petersburg, 191025

Tel.: +7 (812) 406-04 50

5 min to metro station Nevskiy prospekt

## Distance to Grand Hotel Europe:

10 min (2.6 km) by car (taxi - 400 - 800 rub)

20 min (1.5 km) on foot

*Just a 5-minute walk from Nevsky Prospekt, the Cronwell Inn Stremyannaya offers air-conditioned rooms with flat-screen TV and free Wi-Fi.*

*Built in 2010, the Cronwell Inn Stremyannaya features rooms with satellite TV, a work desk, mini fridge, hairdryer and slippers. Guests can make free telephone calls within St. Petersburg.*

*The Cronwell Inn's restaurant serves Russian and European cuisine, and there is an on-site bakery. A daily breakfast buffet is provided, and English-style afternoon tea is served at 17:00.*

*The environmentally friendly Cronwell Hotel has been awarded the Green Key certificate.*

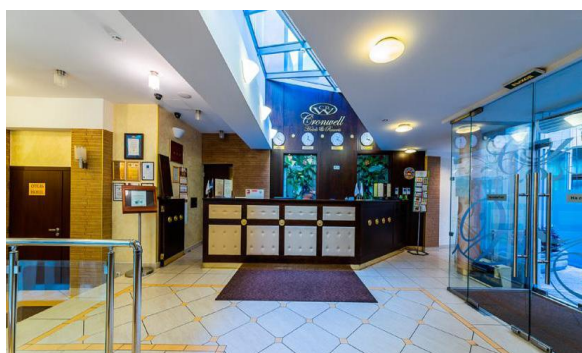
## Room prices (the room price and availability may change)

Superior Single	19 400 RUB
Room Studio	25 000 RUB
Comfort Twin	21 000 RUB

Hotel View



Reception



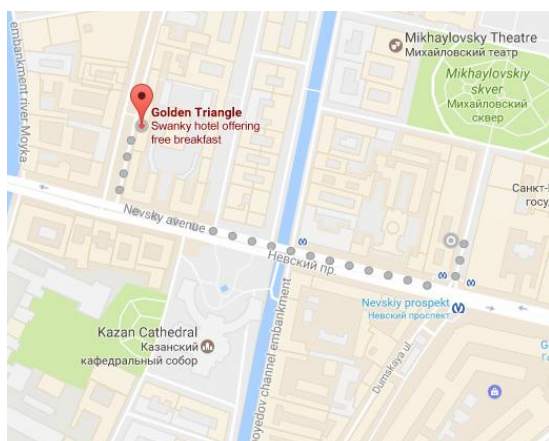
Restaurant



Comfort



# Golden Triangle Hotel \*\*\*



## Contact details

<http://goldtriangle.ru/en/>

12, Ulitsa Bolshaya Konyushennaya, Saint-Petersburg, 191186

Tel.: + 7 (812) 490 77 10

5 min to metro station Nevskiy prospekt

## Distance to Grand Hotel Europe:

8 min (1.2 km) by car (taxi - 400 - 500 rub)

8 min (700 m) on foot

*Just 100 m from Nevsky Prospekt, this boutique hotel in St. Petersburg offers modern rooms with a city view, free WiFi, full buffet breakfasts, and a 24-hour reception. Guests can rent free laptops.*

*Located within a 19th-century building, Golden Triangle Hotel has air-conditioned rooms and suites with flat-screen TVs, a minibar and Italian mahogany furniture. The private bathroom comes with a hairdryer, slippers and free toiletries.*

*Guests can enjoy breakfast in the Golden Triangle's elegant breakfast room every day.*

*The reception team can arrange rental cars and book sightseeing tours.*

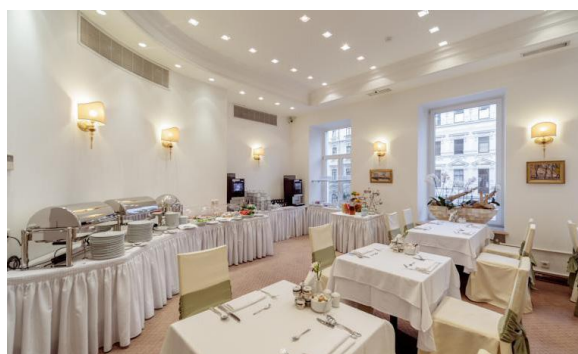
## Room prices (the room price and availability may change)

Standard Single	9 000 RUB
Comfort Double	16 000 RUB
Suite	22 500 RUB

Hotel View



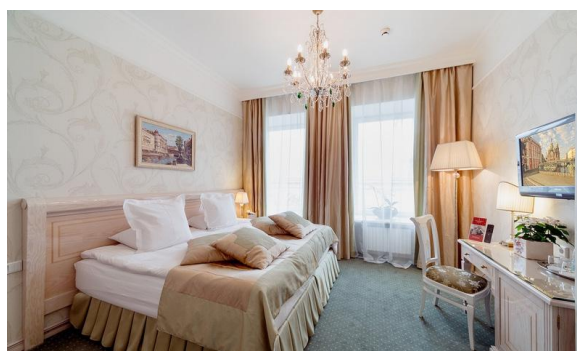
Breakfast Room



Bathroom

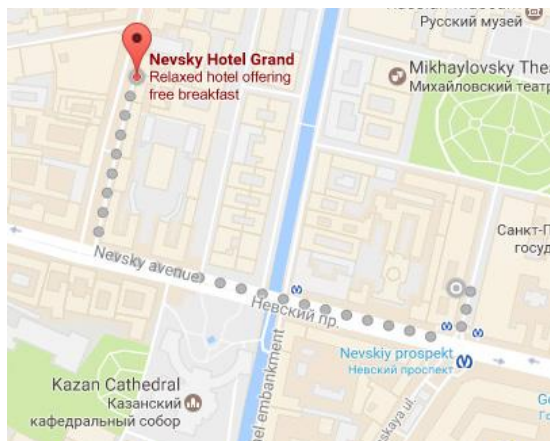


Suite





# Nevsky Grand Hotel \*\*\*



## Contact details

<http://www.nevskygrandhotel.com/en/>

10, Bolshaya Konyushennaya Str., Saint-Petersburg, 191186

Tel.: + 7 (812) 490 77 10

5 min to metro station Nevskiy prospekt

## Distance to Grand Hotel Europe:

7 min (1.2 km) by car (taxi - 400 - 500 rub)

8 min (700 m) on foot

*This hotel is located in St Petersburg's Golden Triangle, a 5-minute walk from the Hermitage, Kazan Cathedral and the Church of our Savior on Spilled Blood. Nevsky Prospekt and Admiralteyskaya Metro Stations are a 5-minute walk from the hotel. Free WiFi is available in all rooms.*

*The Nevsky Grand Hotel offers a hot buffet breakfast, with a wide selection of options available.*

*The hotel can provide hire cars with drivers, experienced interpreters in many languages and flight and rail bookings.*

*The hotel is less than a minute walk from Nevsky Prospekt.*

## Room prices (the room price and availability may change)

Standard Single	9 700 RUB
Superior	16 400 RUB
Suite	18 800 RUB

Hotel View



Restaurant



Bathroom



Standard Single



# Taleon Imperial Hotel \*\*\*\*\*

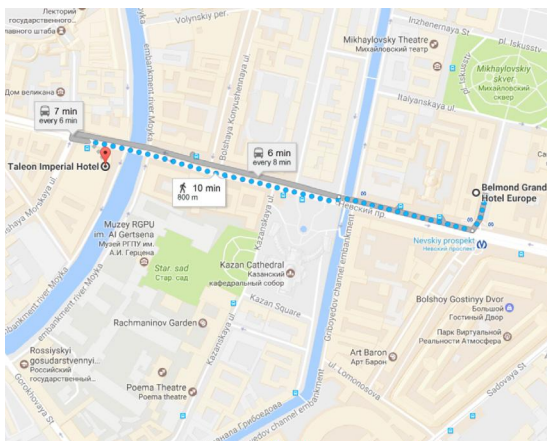
## Contact details

<http://www.taleonimperialhotel.com/>

59, Nab.Reki Moyki, Saint-Petersburg, 191186  
Tel.: +7 (812) 324-99-11; +7 (812) 324-99-44  
7 min to metro station Nevskiy prospekt

## Distance to Grand Hotel Europe:

4 min (1 km) by car (taxi - 400 - 500 rub)  
11 min (900 m) on foot



*Located within an 18th-century palace, this 5-star hotel in St. Petersburg offers an exclusive rooftop spa with indoor pool, 3 gourmet restaurants, and classic-style rooms with 24-hour butler service.*

*The Taleon Imperial Hotel has spacious, air-conditioned rooms and suites with flat-screen TV and safety deposit box.*

*The luxurious Taleon SPA includes different saunas, a salt room, and a sun terrace. Guests can also book a range of massages and beauty treatments.*

*Best dishes of European cuisine can be enjoyed in the award-winning Taleon restaurant.*

## Room prices (the room price and availability may change)

Superior Suite	28 300 RUB
Deluxe Suite	35 300 RUB
Executive Suite	65 800 RUB

Hotel View



Restaurant



Pool in Taleon Spa

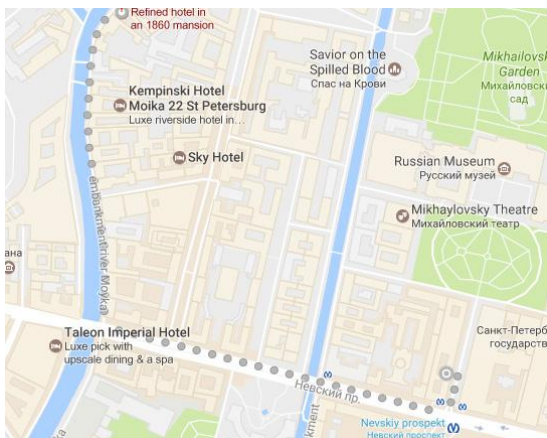


Deluxe Suite





# Pushka Inn Hotel \*\*\*\*



## Contact details

<http://www.pushka-inn.com/>

14, Naberezhnaya Reki Moyki., Saint-Petersburg, 191186

Tel.: +7(812) 644-71-20

12 min to metro station Nevskiy prospekt

## Distance to Grand Hotel Europe:

8 min (2,2 km) by car (taxi - 400 - 800 rub)

14 min (1,1 km) on foot

*Pushka Inn is a 18th-century mansion in a historic part of St. Petersburg, a one minute walk from the Palace Square. It offers non-smoking rooms with air conditioning, satellite TV and free Wi-Fi.*

*The Pushka Inn's restaurant offers European and Russian cuisine and has an extensive wine list.*

*Pushka Inn's concierge service can provide assistance with booking of flights, train tickets, and theater and concert tickets.*

## Room prices (the room price and availability may change)

Single Room	9 000 RUB
Standard Double	15 000 RUB
Family Room	31 000 RUB

Hotel View



Restaurant



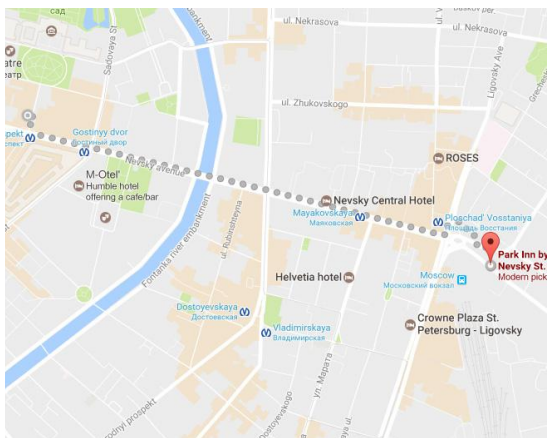
Bathroom



Deluxe Suite



# Park Inn by Radisson \*\*\*\*



## Contact details

<https://www.parkinn.com/>

4A, Goncharnaya Street, Saint-Petersburg, 191036

Tel.: 8 (812) 406-73-10

4 min to metro station Mayakovskaya

## Distance to Grand Hotel Europe:

11 min (3,1 km) by car (taxi - 400 - 800 rub)

26 min (2,2 km) on foot

*This 4-star hotel is on the famous Nevsky Prospekt Boulevard, just a 5-minute walk from Moscow Railway Station. Soundproof rooms, free Wi-Fi and a well-equipped gym are available.*

*Modern, air-conditioned rooms with colorful décor are featured at Park Inn by Radisson Nevsky. Each room has a flat-screen TV and a private bathroom with hairdryer.*

*The Paulaner Bar and Restaurant serves classic German cuisine and Bavarian beer specialties. International dishes and a daily breakfast buffet are also available.*

*Belosselsky-Belozersky Palace and the Alexandrinsky Theatre are a 15-minute walk away. Ploschad Vosstaniya Metro Station is just 100 m away, providing connections to all parts of the city.*

## Room prices (the room price and availability may change)

Standard Single	14 000 RUB
Standard Double	15 700 RUB
Buisness Single	15 400 RUB

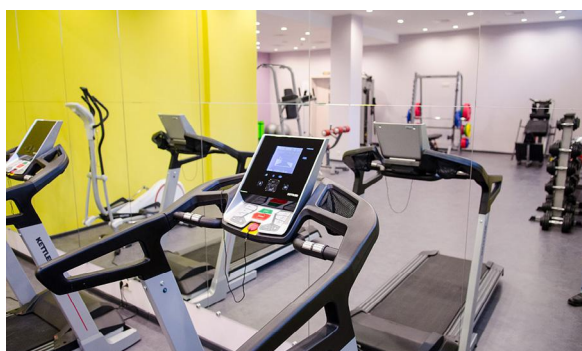
Hotel View



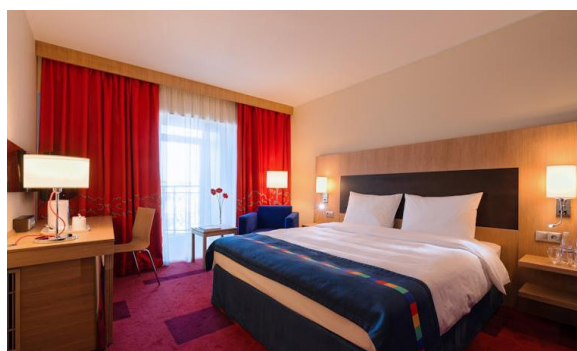
Restaurant



Fitness Center

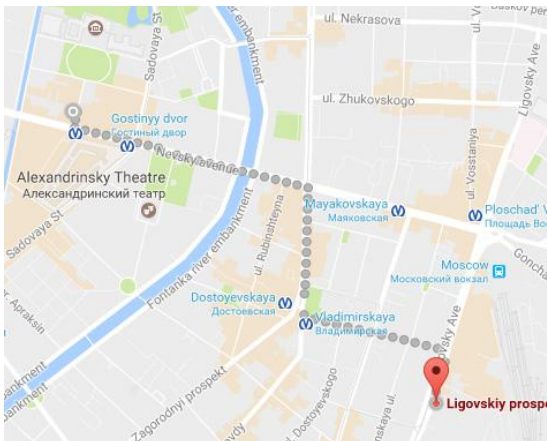


Standard Single





# Ibis St Petersburg Centre \*\*\*



## Contact details

<http://www.ibis.com/gb/united-kingdom/index.shtml>

54, Ligovsky Prospekt, Saint Petersburg, 191040

Tel.: +7(812) 622 01 00

10 min to metro station Mayakovskaya

## Distance to Grand Hotel Europe:

11 min (2,6 km) by car (taxi - 400 - 700 rub)

35 min (2,6 km) on foot

*This 3-star hotel in the heart of St. Petersburg is just a 5-minute walk from Nevsky Prospekt's shops and only 500 m from Moscow Railway Station. In-room WiFi is free.*

*Rooms at Ibis St. Petersburg Centre have air conditioning, satellite TV and a work desk. The en suite bathrooms are stocked with a hairdryer and free bathroom amenities.*

*Ibis Kitchen Restaurant serves Mediterranean cuisine. The hotel also offers Ibis Lounge Bar, where guests can enjoy refreshing drinks and light snacks.*

*Ibis also has a tour desk and a 24-hour front desk. Secured covered parking is also available.*

## Room prices (the room price and availability may change)

Standard Single 6 000 RUB

Standard Double 6 000 RUB

Hotel View



Restaurant

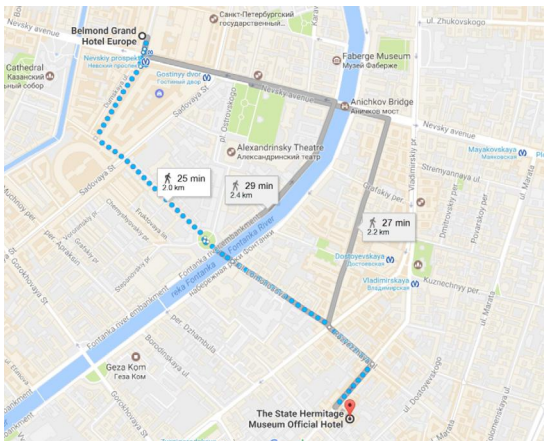


Bar

Standard Single



# The State Hermitage Museum Official Hotel \*\*\*\*\*



## Contact details

<https://thehermitagehotel.ru/en/luxury-accommodation-in-st-petersburg/>

10, Pravdy Street, Saint-Petersburg, 191119

Tel.: +7 (812) 777-98-10

7 min to metro station Vladimirskaya

## Distance to Grand Hotel Europe:

8 min (2,6 km) by car (taxi - 400 - 700 rub)

25 min (2 km) on foot

*This exclusive 5-star hotel is in the 1830s mansion in central Saint Petersburg and represents the atmosphere of the original Hermitage Museum. A spa center and free Wi-Fi are featured here.*

*The luxurious rooms and suites at The State Hermitage Museum Official Hotel Saint Petersburg feature elegant furnishings, designed by Italian woodwork masters from Florence. Every room includes a flat-screen TV, a minibar and a private bathroom decorated with marble and bathrobes.*

*Michelangelo Boutique Restaurant offers traditional Italian dishes and exquisite desserts. The quiet Lobby Bar welcomes guests to the tradition of Russian pastime of tea drinking. The elegant Catherine the Great Restaurant serves Russian cuisine based on the menu of the historic Winter Palace.*

## Room prices (the room price and availability may change)

Premium Room	23 000 RUB
Junior Suite	37 000 RUB
Suite	46 000 RUB

Hotel View



Hotel Lobby area



Restaurant

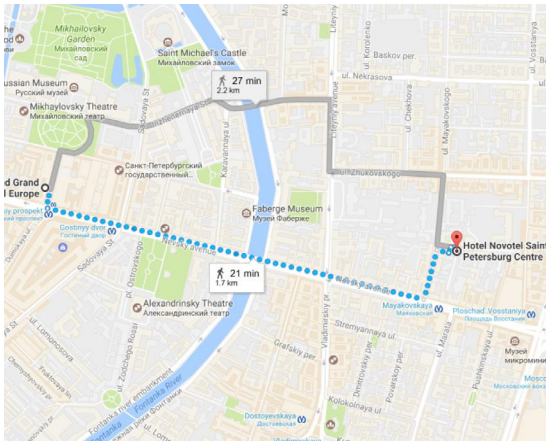


Premium Room





# Novotel St Petersburg Centre \*\*\*\*



## Contact details

<http://www.accorhotels.com/gb/united-kingdom/index.shtml>

3A, Ulitsa Mayakovskogo, Saint-Petersburg, 191025

Tel.: +7 (812) 335 11 88

4 min to metro station Mayakovskaya

## Distance to Grand Hotel Europe:

8 min (1.7 km) by car (taxi - 500 - 700 rub)

21 min (1.7 km) on foot

*Novotel St. Petersburg Centre is within a 3-minute walk of Nevsky Prospekt and Mayakovskaya Metro Station. It offers a fitness center, varied cuisine and rooms with hot drinks facilities.*

*The interiors of Novotel St Petersburg Centre are contemporary and attractive. In-room comforts include satellite TV, minibars and air conditioning.*

*Russian and Mediterranean food is served in the Cote Jardin restaurant with summer terrace. Cocktails are served in the lounge bar, and homemade cake is available from La Brioche Deli-Counter.*

*After a long day, guests can relax in the Novotel's Turkish steam bath, or can book a massage.*

## Room prices (the room price and availability may change)

Executive Double	14 200 RUB
Junior Suite	15 600 RUB
Superior	16 000 RUB

Hotel View



Restaurant



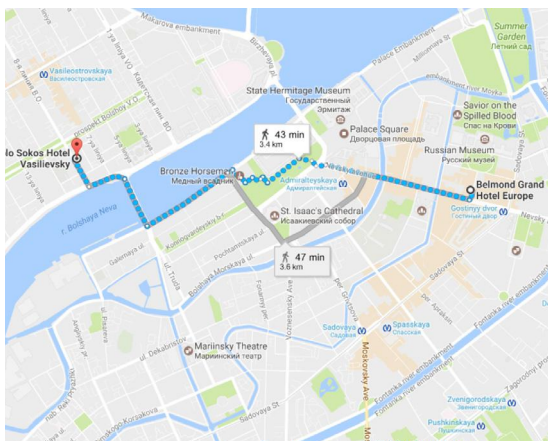
Fitness Center



Junior Suite



# Solo Sokos Hotel Vasilievsky \*\*\*\*



## Contact details

<https://www.sokoshotels.fi/en/st-petersburg/sokos-hotel-vasilievsky>

11 - 13, Vasilievsky Island, 8th Line, Saint Petersburg, 190034

Tel.: +7 (812) 335 22 90

9 min to metro station Vasileostrovskaya

## Distance to Grand Hotel Europe:

11 min (3.5 km) by car (taxi - 500 - 700 rub)

45 min (3.4 km) on foot

*Solo Sokos Hotel Vasilievsky gallery hotel is located on Vasilievsky Island, within a 5-minute walk of Blagoveshchensky Bridge and Neva embankment. Palace Square and State Hermitage Museum are a 10-minute drive away. The 4-star hotel hosts art exhibitions on a constant basis.*

*All rooms are individually decorated and include LCD TVs and comfortable seating areas.*

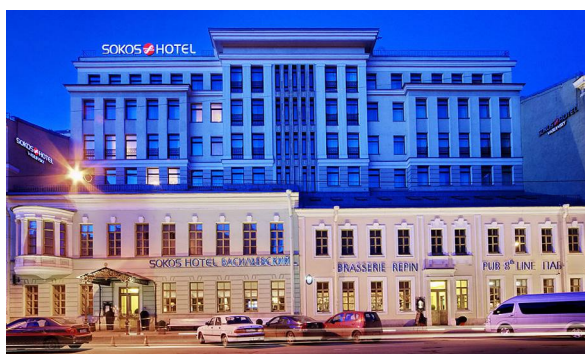
*Free, high speed WiFi is accessible throughout this 19th-century building. Stylish décor and furnishing is featured throughout the property and guests are assisted 24 hours a day by Vasilievsky's friendly, English-speaking staff. A fitness centre and a sauna are available.*

*Repin Lounge Restaurant & Bar serves dishes of Russian and international cuisines, while 8 Liniya pub screens sports games in Full HD and offers draft beer and a variety of whisky.*

## Room prices (the room price and availability may change)

Executive Double	14 200 RUB
Junior Suite	15 600 RUB
Superior	16 000 RUB

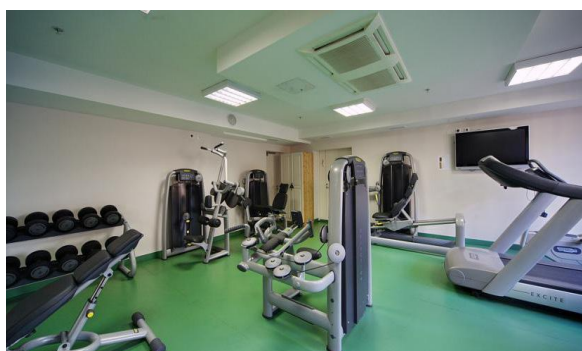
Hotel View



Restaurant



Fitness Center



Junior Suite

